

ORDERING INFORMATION

Number of Cartridges	
01	1 Cartridge
03	3 Cartridges
05	5 Cartridges
08	8 Cartridges
12	12 Cartridges

Cartridge Length (Nominal)	
0	No Dome
1	10" (250mm)
2	20" (500mm)
3	30" (750mm)

PHV XX x 7 XXXX

Clamp [F]	Available for Housing
T020	01
T030	03
T040	05, 08

DIN 11851 Liner Part [F]	Available for Housing
L050	DN50
L080	DN80
L100	DN100
L150	DN150

DIN 11851 Male Part [F]	Available for Housing
M050	DN50
M080	DN80
M100	DN100
M150	DN150

DIMENSIONAL DATA					
MODEL	A (mm)	ØD (mm)	ØE (mm)	HANDLES	BOWL REMOVAL HEIGHT (mm)
PHV 011	347	88.9	130	NO	300
PHV 012	597			NO	550
PHV013	847			NO	800
PHV031 / 051	480	219	400	NO	300
PHV 032 / 052	725			YES	550
PHV 033 / 053	980	273	440	YES	800
PHV 081	508			NO	300
PHV 082	758			YES	550
PHV 083	1008	400	570	YES	800
PHV 121	557			NO	300
PHV 122	807			YES	550
PHV 123	1057			YES	800

TECHNICAL DATA	
SERIES	PHV
CARTRIDGE SOCKET	C-STYLE
DIRECTIVES	2014/34/EU
ATEX REGULATION	GROUP 2 CAT 2 GAS & DUST FLUID GR IIC ZONE 1 & 21
PHYSICAL STATE	GAS
VESSEL MATERIAL	AISI 316L / W.N. 1.4404
EXTERNAL SURFACE	MECHANICAL POLISHING
INTERNAL SURFACE	MECHANICAL POLISHING (<0.8UM RA ON HOUSING HEAD)



PARKER LOGO TO APPEAR OPPOSITE DATA LABEL

AVT® FILTER HOUSING

PART NUMBER

MODEL

CARTRIDGE No. x HIGH (inch)

VESSEL MATERIAL

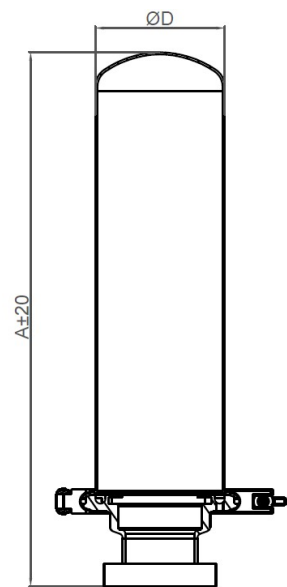
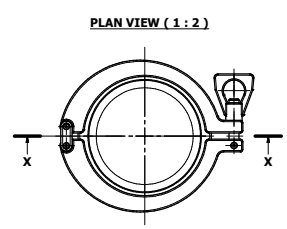
YEAR OF MANUFACTURE

VESSEL NUMBER

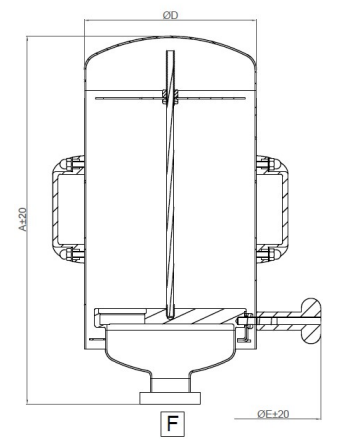
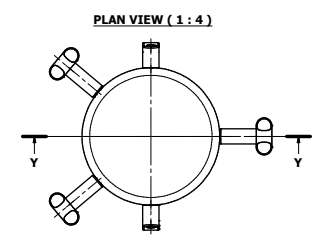
ATEX CLASSIFICATION II 2 GD IIC

ATEX CERTIFICATION 04.01 EX.02-X

SINGLE CARTRIDGE HOUSINGS



MULTI CARTRIDGE HOUSINGS



NOTES
DIMENSIONS NOT INDICATED ARE FOR PARTS NOT SIGNIFICANT FOR FUNCTIONALITY AND SAFETY OF THE VESSEL. THOSE PARTS COULD BE MODIFIED OR SUBSTITUTED WITHOUT NOTICE.

MATERIAL CERTIFICATION
VESSELS REQUIRING MATERIAL CERTIFICATION MUST BE SPECIFIED AT TIME OF ORDER.
PHV 01 (SINGLE ROUND) - CAN BE SUPPLIED ONLY WITH X3.1 CERT (BASIC), PART NO: 609500024.
PHV 03/05/08/12 (MULTI) CAN BE SUPPLIED ONLY WITH X3.1 (INTERMEDIATE), PART NO: 609500052.
(NOTE: EXCLUDES INTERNAL PARTS, INTRUSION GRID, HANDLES & HAND WHEELS).

FINAL ASSEMBLY NOTES
1. VESSEL TO BE SERIALISED.
2. SERIAL NUMBER TO BE MARKED ON THE VESSEL ETCH.

DOCUMENTS REQUIRED
1. REPORT TEST CERTIFICATE.
2. USER MANUAL.

GENERAL NOTES
1. THE CUSTOMER IS RESPONSIBLE FOR ENSURING ADEQUATE SUPPORT UPON INSTALLATION.
2. CUSTOMER IS RESPONSIBLE FOR INSTALLATION OF SUITABLE PRESSURE RELIEF DEVICES.

* MULTIPLE CHANGES, FOR CLARITY ON EXACT CHANGES REFER TO IMPLEMENTED CHANGE SECTION ON THE ECO.

ECO No.	0297763	REV No.	A
DO NOT SCALE - IF IN DOUBT ASK			
PLEASE CONSIDER THE ENVIRONMENT PRIOR TO BUYING THIS PRODUCT			
BASED ON BS 5838 CONFORMANCE ON WALLPAPER			
GENERAL TOLERANCES UNLESS OTHERWISE STATED			
MACHINED DIMENSIONS	XX ±0.15 UP TO 300 ±0.5		
	X ±0.25 OVER 300 TO 1000 ±0.5		
POSITIONAL TOLERANCE	PLAIN HOLES 06.15		
	DRILLED HOLES 00.25 0.15 TIR		
CONCENTRICITY TOLERANCE			
MACHINED SURFACES INDICATED THIS SURFACE TEXTURE TO BE 11.34 UNLESS OTHERWISE SPECIFIED			
ANGLES ±1.0° (EXCEPT CHAMFERS)			
METRIC THREADS TO BS 2643 UNL CLASS			
EXTERNAL GA. INTERVAL	H7		
PIPE THREADS	PRESSURE TIGHT TO BS 21		
SHEET METALWORK & FABRICATIONS			
SHEET METALWORK DIMENSIONS	UP TO 500 ±0.5		
	OVER 500 TO 1000 ±1.0		
	OVER 1000 ±1.5		
FABRICATED PARTS DIMENSIONS			
UP TO 500	±0.4		
OVER 500	±0.6		
OVER 1000	±0.8		
POSITIONAL TOLERANCE FOR PLAIN & TAPPED HOLES			
UP TO 500	±0.2		
OVER 500	±0.25		

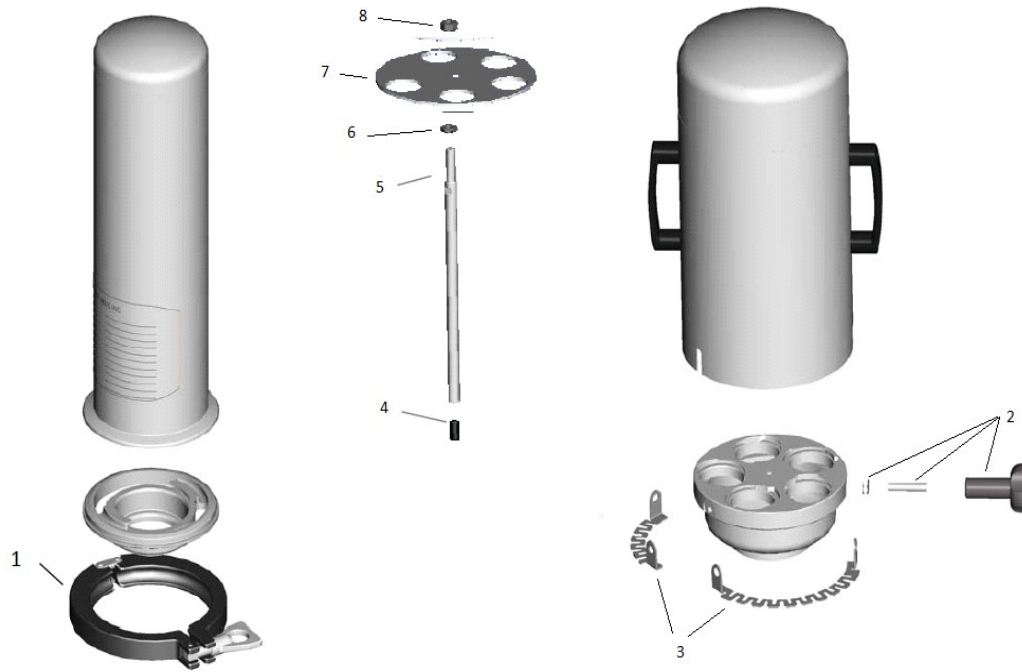


THIS DOCUMENT CONTAINS INFORMATION THAT IS CONFIDENTIAL AND PROPRIETARY TO PARKER HANNIFIN MANUFACTURING LTD. (PARKER). THIS DOCUMENT IS FURNISHED ON THE UNDERSTANDING THAT THE DOCUMENT AND THE INFORMATION IT CONTAINS WILL BE USED ONLY IN CONNECTION WITH THE BUSINESS RELATIONSHIP OTHER THAN CONDUCTING BUSINESS WITH PARKER, AND WILL BE RETURNED AND ALL COPIES DESTROYED UPON REQUEST BY PARKER. THE ACCEPTANCE OF THIS DOCUMENT IMPLIES THE CUSTOMER'S AND USER'S AGREEMENT TO HOLD PARKER HANNIFIN MANUFACTURING LTD. HARMLESS AND ASSURE THAT ALL PERFORMANCE, DURABILITY, MAINTENANCE, SAFETY AND MARKING REQUIREMENTS OF THE APPLICATION ARE MET. COPYRIGHT PARKER. TIME OF COPYRIGHT TO FIRST USE INDICATED ON THIS DOCUMENT. ALL RIGHTS RESERVED.

MATERIAL	SCALE	APPROVED	TITLE	DRG No.	SHEET
GEN. ARR.T.	1:4	NAME: TechM, DATE: 10-Aug-2018, CHECKED: JG, DATE: 14-Aug-2018, APPROVED: DF, DATE: 14-Aug-2018	PHV CODE 7 VENT HOUSINGS	179502683	1 / 2

SPARE PARTS LIST

POS	DESCRIPTION	MATERIAL	PART CODE				
			PHV 01	PHV 03	PHV 05	PHV 08	PHV 12
1	VEE CLAMP	AISI 316L	XTCSS58AL1	-	-	-	-
2	INTRUSION GRID KIT	AISI 316L	-	ASK	FOR	PART	CODE
3	HAND WHEEL KIT (C/W THREAD BAR AND NUT)	-	-	ASK	FOR	PART	CODE
4	TIE BAR SCREW	AISI 316L	-	XTRSS00AL (x1)	XTRSS00AL (x1)	XTRSS00AL (x2)	XTRSS00AL (x2)
5	TIE ROD 10"	AISI 316L	-	XTRSS13AL (x1)	XTRSS13AL (x1)	XTRSS13AL (x2)	XTRSS13AL (x2)
	TIE ROD 20"	AISI 316L	-	XTRSS18AL (x1)	XTRSS18AL (x1)	XTRSS18AL (x2)	XTRSS18AL (x2)
	TIE ROD 30"	AISI 316L	-	XTRSS29AL (x1)	XTRSS29AL (x1)	XTRSS29AL (x2)	XTRSS29AL (x2)
6	HEXAGONAL NUT	AISI 316L	-	XTNSS00AL1 (x1)	XTNSS00AL1 (x1)	XTNSS00AL1 (x2)	XTNSS00AL1 (x2)
7	SPIDER PLATE	AISI 316L	-	XSPSS62AL	XSPSS63AL	XSPSS64AL	XSPSS65AL
8	HEXAGONAL NUT	AISI 316L	-	XTNSS00AL (x1)	XTNSS00AL (x1)	XTNSS00AL (x2)	XTNSS00AL (x2)



ECO No.	0297763	REV No.	A
DO NOT SCALE - IF IN DOUBT ASK			
PLEASE CONSIDER THE ENVIRONMENT PRIOR TO PURCHASING THIS PRODUCT			
BASED ON BS 9898			
GENERAL TOLERANCES UNLESS OTHERWISE STATED			
MACHINED DIMENSIONS	XX	±0.15	UP TO 300
	±	±0.25	OVER 300 TO 1000
POSITIONAL TOLERANCE			
PLAIN HOLES		±0.15	
DRILLED HOLES		±0.20	±0.15 TIE
CORNER RADIUS TOLERANCE			
MACHINED SURFACES INDICATED THIS			
SURFACE TEXTURE TO BS 1134			
VALUES IN MICROMETRES			
ANGLES		± 1/2°	(EXCEPT CHAMFERS)
METRIC THREADS TO BS 2643			
EXTERNAL	6g		INTERNAL 6H
PIPE THREADS			
PRESSURE TIGHT TO BS 21			
SHEET METALWORK & FABRICATIONS			
SHEET METALWORK DIMENSIONS			
UP TO 500		±0.5	
OVER 500 TO 1000		±1.0	
OVER 1000		±1.5	
FABRICATED PARTS DIMENSIONS			
UP TO 500		±2	
OVER 500 TO 1000		±4	
OVER 1000		±6	
POSITIONAL TOLERANCE FOR PLAIN & TAPPED HOLES			
UP TO 500		±0.2	
OVER 500		±0.3	

Parker
 Parker Materials Manufacturing Ltd
 Gommick Hurter
 Process Fabrication - Europe
 Durham Road
 Billingham, Co. Durham
 DH1 2SF, England
 Phone +44 (0)191 4105131
 Fax +44 (0)191 4105112
 Email: info@parker.com
 www.parker.com/processfabrication

THIS DOCUMENT CONTAINS INFORMATION THAT IS CONFIDENTIAL AND PROPRIETARY TO PARKER MATERIALS MANUFACTURING LTD. (PARKER). THIS DOCUMENT IS FURNISHED ON THE UNDERSTANDING THAT THE DOCUMENT AND THE INFORMATION IT CONTAINS WILL BE KEPT IN CONFIDENCE TO THE USE OF THE USER AND WILL BE RETURNED AND ALL COPIES DESTROYED UPON REQUEST BY PARKER. THE ACCEPTANCE OF THIS DOCUMENT THROUGHOUT YOUR WORKING AND TESTING IS YOUR RESPONSIBILITY FOR THE INFORMATION AND ASSURANCE THAT ALL PERFORMANCE, DURABILITY, MAINTENANCE, SAFETY AND WORKING REQUIREMENTS OF THE APPLICATION ARE MET. COPYRIGHT PARKER. TRADE OF COPYRIGHT IS FIRST YEAR INDICATED ON THIS DOCUMENT. ALL RIGHTS RESERVED.

* MULTIPLE CHANGES, FOR CLARITY ON EXACT CHANGES REFER TO IMPLEMENTED CHANGE SECTION ON THE ECO.

MATERIAL	SCALE	DATE	DRAWN	CHECKED	APPROVED	TITLE	DRG No.	SHEET
GEN. ARRT.	1:4	10-AUG-2018	TechM	JG	DF	PHV CODE 7 VENT HOUSINGS	179502683	2 / 2